



The 1st joint technology Showroom
of the Paris-Saclay Innovation Cluster

Leadership



Support



Technology Showroom of Paris-Saclay




Become immersed in the scientific and technological treasures of Paris-Saclay

For centuries now, Paris-Saclay has been a center for inventiveness. The alliance of research and industry that happens here creates a flurry of initiatives in service of deeptech innovation.

The 1st joint technology Showroom of Paris-Saclay aims to be a point of entry for this extraordinary Cluster of innovation. A shared tool for the ecosystem, the Showroom presents the scientific

and technological wealth of the area, and has the power to federate a multitude of diverse actors.

Located 18 km from Paris, the Showroom welcomes national and international delegations wishing to discover Paris-Saclay and its areas of focus. The exhibition space reveals the promising and ground-breaking technologies born in the Cluster. Regularly updated, it illustrates the areas of expertise and innovation as well as the organizations responsible for all of these gems stamped, "made in Paris-Saclay"!



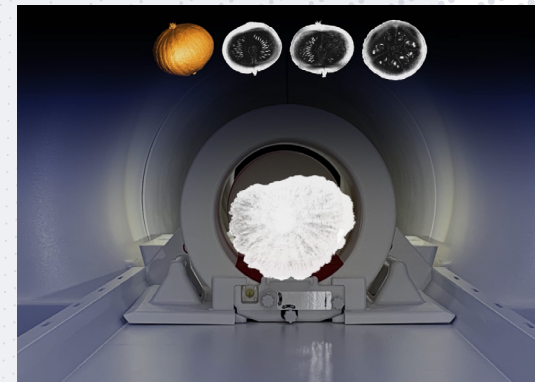
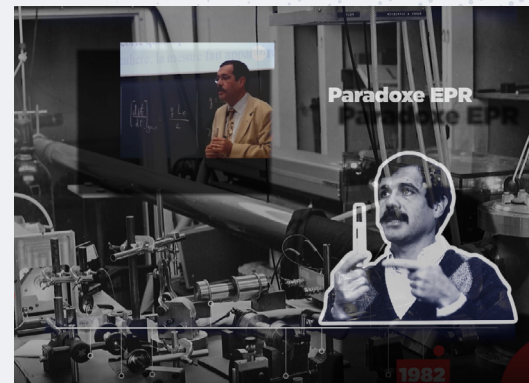
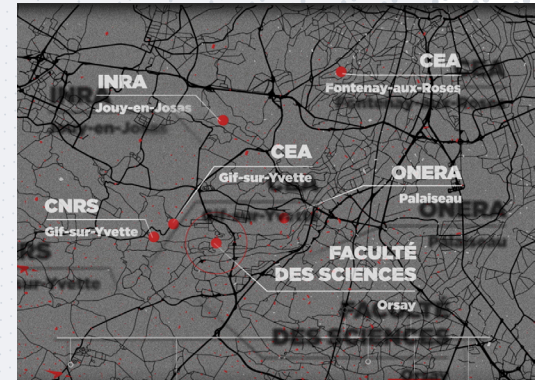
01 Le berceau
de l'inventivité


Immersion Corner

The incredible history of Paris-Saclay

The structure of the visit is customizable and can be adapted to the delegation's needs. A narrative thread unites three themes throughout the Showroom, presented in the form of corners.

The Immersion Corner marks the start of the visit. The public is invited to watch an immersive film, designed specifically for the Showroom and projected on an optical theater. In French and English, the film provides a retrospective of the key dates, discoveries and awards that have participated in building this internationally renowned Cluster.





Each year new
game-changers, innovators,
entrepreneurs, investors



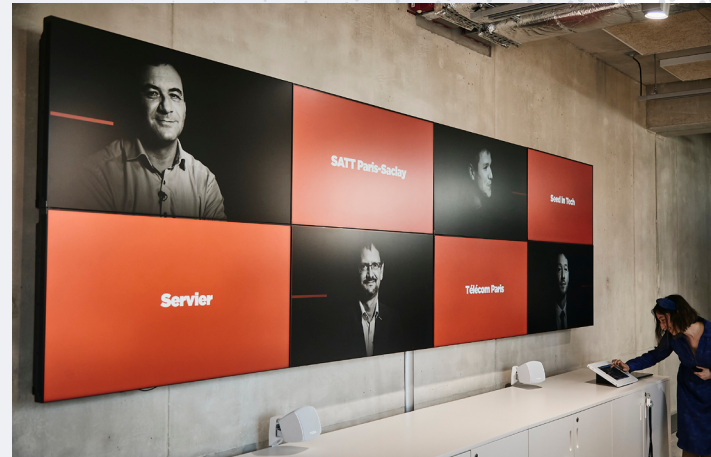
Live Corner

*The remarkable scientific and
technological treasures of Paris-Saclay*

Through a panoramic wall of images, the Live Corner shows visitors the overall map of Paris-Saclay, starting in the 2020s.

Paris-Saclay today

With magnificent aerial views of the Essonne and Yvelines landscapes, from R&D centers to large industrial groups, the façades of academic buildings and growing student life facilities, the sequence illustrates the scientific prowess of Paris-Saclay through its areas of excellence, emblematic actors and key projects on the horizon.



Paris-Saclay on the edge of innovation

Academic and industrial leaders along with ambassadors from the site's various fields of excellence and innovation, share their projects and ambitions in more intimate capsule videos that reveal the strength of the innovation Cluster in the face of society's most pressing issues.

#Health #Mobility #Energy
#AgriTech #Digital
#Quantum #AI #Biotech
#Spatial #Beautytech #Microbiota

Showcase Corner

The essential “made in Paris-Saclay”

Ten exhibition totems are dispersed throughout the Showroom. This final space, the Showcase Corner, provides visitors with a true sense of the “Paris-Saclay Innovation Playground”.

Each product or prototype from a start-up or industrial actor in the Cluster, is highlighted by the guide who will take the time to explain the origin of the technology and the philosophy of the innovator behind it.

Farm³ - 2022 Exhibition



Quandela - 2022 Exhibition



Phyling - 2022 Exhibition

2022 Exhibition:

- **EikoSim** [mechanical simulation]
- **Exotrail** [new space]
- **Farm3** [agritech]
- **FinX** [mobility]
- **Quandela** [quantum computing]
- **L'Oréal R&I** [beautytech]
- **Phyling** [sports]
- **SpaceSense** [satellite imaging - AI]
- **TheraPanacea** [AI - radiotherapy]
- **TotalEnergies** [decarbonized energies]

2023 Exhibition:

- **Abbelight** [cell imaging]
- **CS Group** [defense - security - spatial]
- **Gamma Pulse** [healthtech]
- **Hocoia** [healthtech]
- **Mainbot** [edtech]
- **Maison M** [beautytech]
- **Pasqal** [quantum computing]
- **Snowpack** [cybersecurity]
- **TotalEnergies** [decarbonized energies]
- **Umiami** [foodtech]

“

My goal is to act as a bridge
connecting the worlds
of research, industry
and start-up!

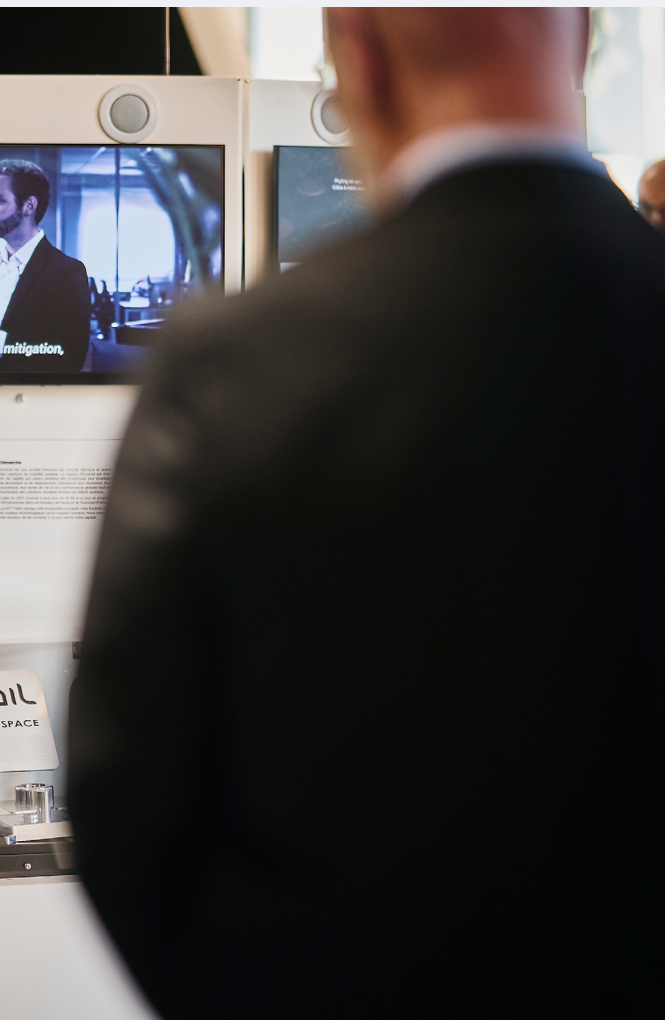
Natalia Buryka

*Technology Showroom
Guide*

A researcher and historian by training, Natalia Buryka puts her scientific mediation skills to use in the Paris-Saclay Technology Showroom.

She is passionate about the diversity of technologies displayed in the Showroom and proudly represents the site to the academic, industrial, institutional and media delegations she welcomes here.





Would you like to organize:

- ▶ a guided visit for your employees, customers or partners?
- ▶ your company seminar?
- ▶ workshops on innovation?

natalia.buryka@satt-paris-saclay.fr

+33 6 11 57 46 08

Would you like to sponsor the Showroom?

anne-laure.aurelle@satt-paris-saclay.fr

+33 6 18 69 84 34



Playground Paris-Saclay

3, boulevard Thomas Gobert - 91120 Palaiseau, France

www.satt-paris-saclay.fr/en/paris-saclay-playground